



**SOUTHEASTERN  
HYPERSCALE-READY  
DIGITAL INFRASTRUCTURE**

# DC BLOX's Integrated Solutions and Proven Experience

The rapid growth of the Southeastern US is driving significant investments in digital infrastructure—fueled by affordable land, available power, and increasing demand for hyperscale, cloud, and SaaS companies to deploy infrastructure closer to consumers. Rising demand for richer digital communications, content experiences, and cloud expansion into edge markets is accelerating the need for scalable data center and fiber capacity.

At DC BLOX, we address this demand by delivering integrated, mission-critical digital infrastructure that enables rich customer experiences, business success, and community opportunity across the Southeast. Since 2014, we have perfected the design and construction of modular, interconnected, and AI-ready data center campuses—delivering greenfield, purpose-built facilities on accelerated schedules.





## Our Comprehensive Solutions

- **Hyperscale-Ready Data Centers:** Scalable designs for success-based deployments from 1MW to 100MW+
- **Edge-Market Presence:** Multiple data centers with expansion potential across the region
- **Subsea Connectivity:** A cable landing station in Myrtle Beach with direct global access
- **Regional Network:** Custom dark fiber routes that streamline deployment and reduce complexity
- **Tier III Standards:** Facilities designed to Uptime Institute Tier III standards (Birmingham and Greenville certified)
- **Strategic Partnerships:** Robust relationships with business partners and government entities to accelerate land acquisition, construction, and operations

Backed by leading investors Bain Capital and Post Road Group, DC BLOX stands out as a vertically integrated provider capable of meeting the evolving needs of hyperscalers, enterprises, and cloud service providers.

Let's build the future of digital infrastructure together—enabling growth, agility, and innovation across the digital age.



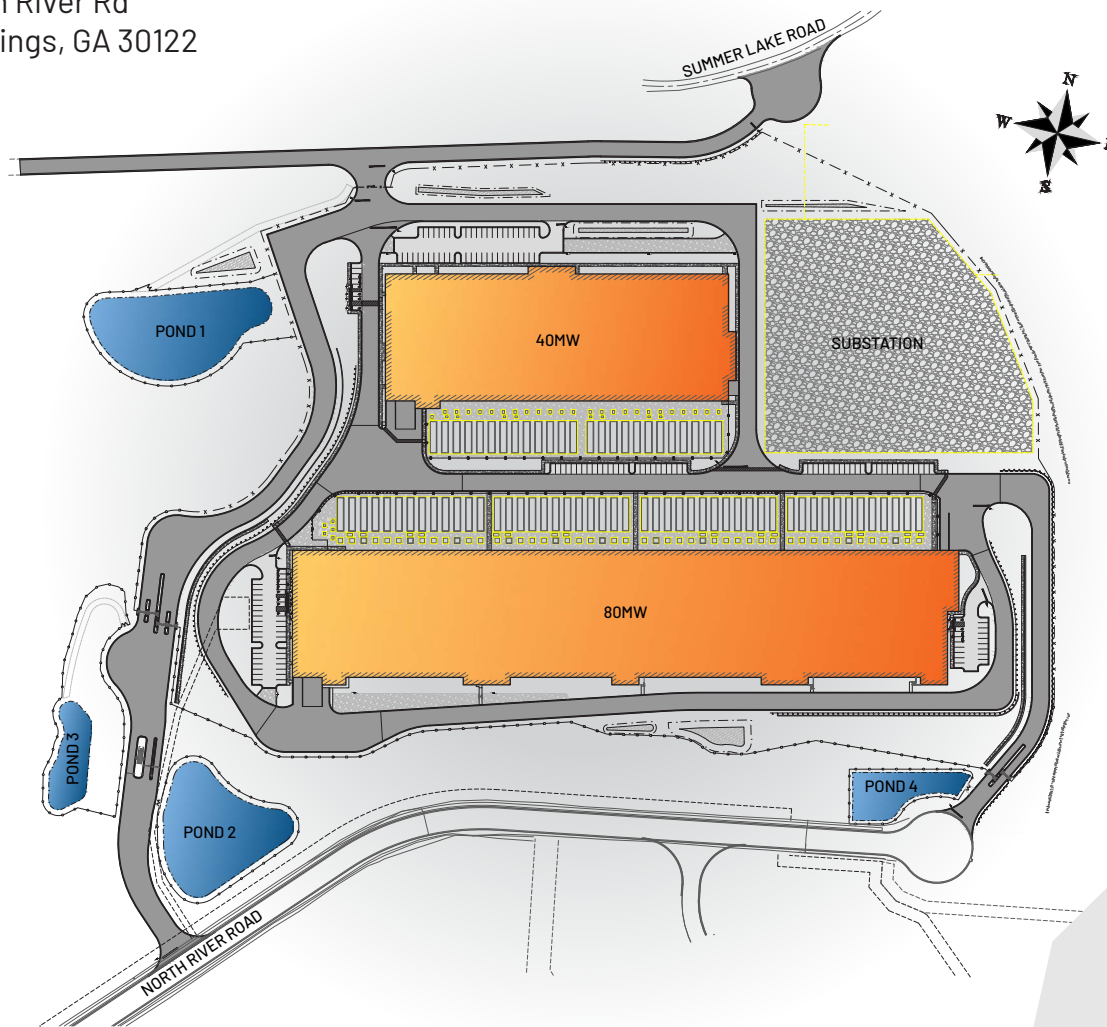
## Atlanta West (ATL1)



Strategically located on 55 acres next to Microsoft's 300-acre facility and 2.5 miles from Google. Total capacity of 761,000 square feet with 120 MW critical load and offering N+1 redundancy, a high-density design, and provisions for liquid cooling. Also boasting two central meet-me rooms and dark fiber to 56 Marietta Street, 180 Peachtree Street, and the Myrtle Beach cable landing station.

# Site Plan

1701 North River Rd  
Lithia Springs, GA 30122



Acreage ~55

Total SF (Buildable) ~761,000 SF

Number of Buildings **2 two-story buildings**

SF/Building **ATL1-A: 498,000 SF**

**ATL1-B: 263,000 SF**

Initial Move-In **Q2/2026**

Power **200cMW/300gMW**

Utility Provider **Greystone**

Status **Committed**



## Atlanta East (ATL2)

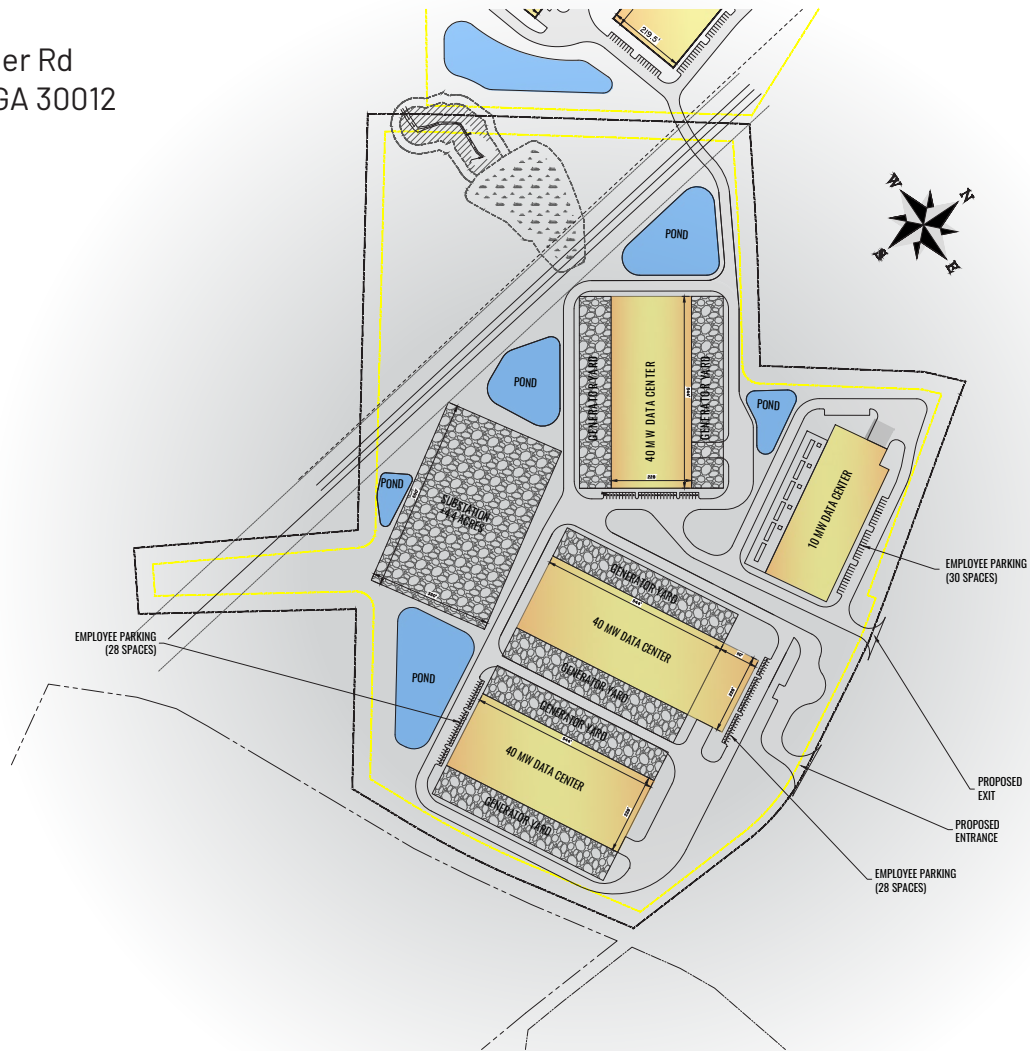


68 acres of land with nearly 1 million square feet of data center space at full build-out and just 24 miles east of Atlanta. DC BLOX also plans to build a dark fiber ring around the Atlanta metropolitan area as part of the project. The ring will provide significant new fiber capacity for campus tenants and will also provide a resilient connection to the DC BLOX dark fiber route transiting from Atlanta to its Myrtle Beach, South Carolina cable landing station, offering global connectivity options.



# Site Plan

1726 Farmer Rd  
Conyers, GA 30012



Acreage ~68

Total SF (Buildable) ~856,000 SF

Number of Buildings 4 in total (3 of which are two-story)

SF/Building ATL2-A: 76,000 SF (Anchor Tenant)

ATL2-B, C, D: ~260,000 SF/each

Initial Move-In Q4/2026

Power 134cMW/201gMW

Utility Provider Georgia Power

Status Committed



## Charleston North (CHS1)

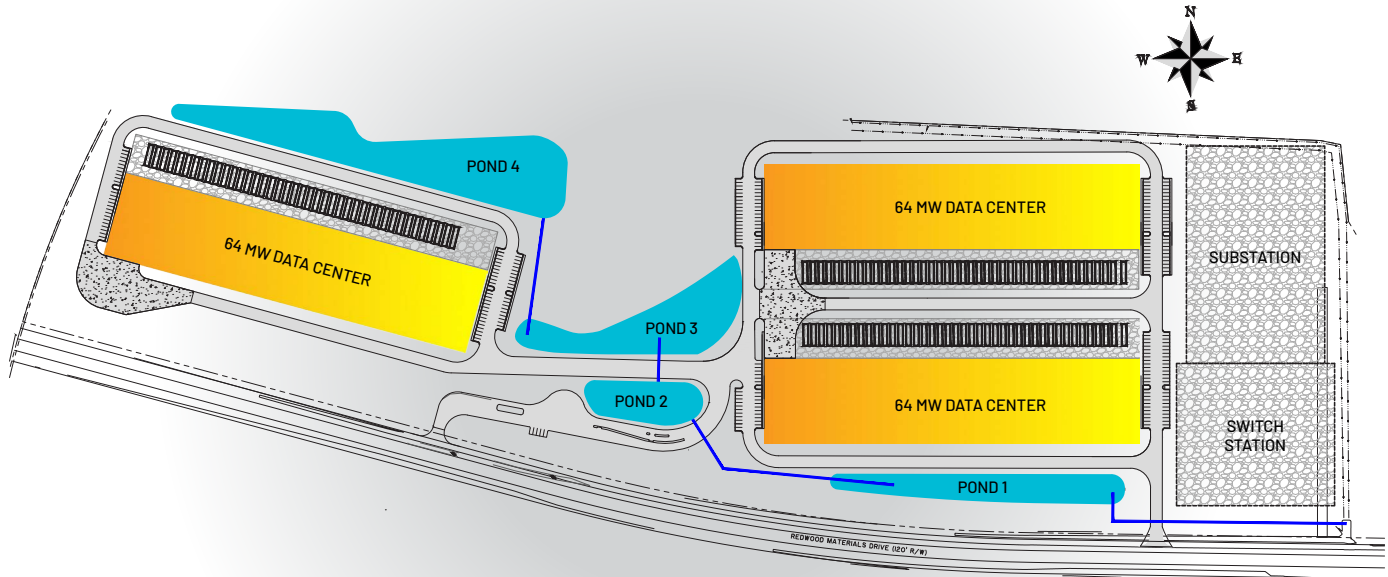


DC BLOX is offering a hyperscale-ready data center campus located on 64 acres in the new Camp Hall Industrial Park in South Carolina with direct access to SC Hwy 27 to support the rapidly growing demand for digital infrastructure space, power, and connectivity in the area.



# Site Plan

Camp Hall Industrial Park – Campus 6



Acreage **64.4**

Total SF (Buildable) **~1,131,000 SF**

Number of Buildings **3 two-story buildings**

SF/Building **CHS1-A: 498,000 SF**

**CHS1-B: 263,000 SF**

**CHS1-B: 263,000 SF**

Power **200cMW/300gMW**

Utility Provider **Santee Cooper**

Status **Planning**



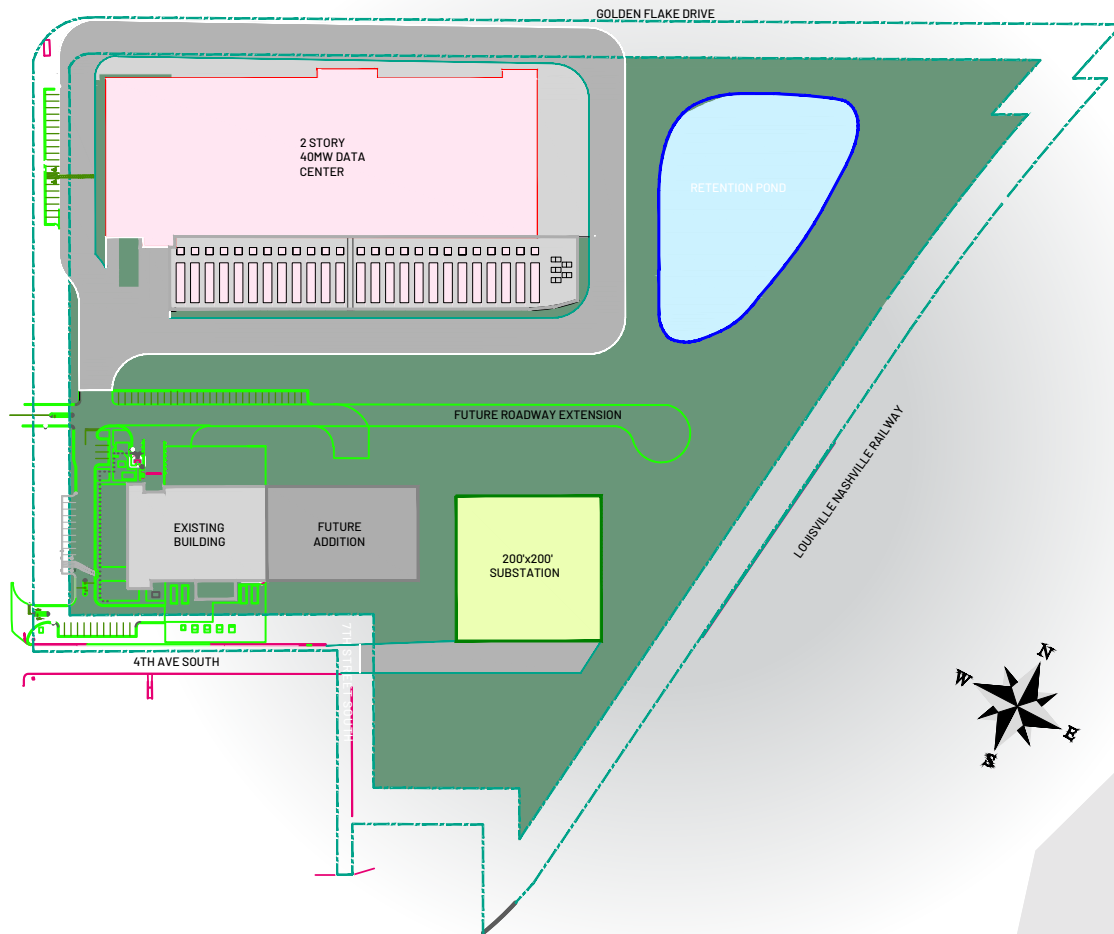
## Birmingham (BHM1)



DC BLOX's Birmingham data center campus offers colocation and wholesale solutions today, with a new 263,000 sq ft data center available for large-scale build-to-suit deployments. The campus is connected to DC BLOX's regional network with dark fiber connectivity available.

# Site Plan

433 6th St South  
Birmingham, AL 35233



Acreege **30 (~15 available)**

Total SF (Buildable) **~263,000 SF**

Number of Buildings **2**

SF/Building **BHM1-B: 263,000 (two-story)**

Initial Move-In **Q4/2026**

Power **40cMW/60gMW**

Utility Provider **Alabama Power**

Status **Planning**

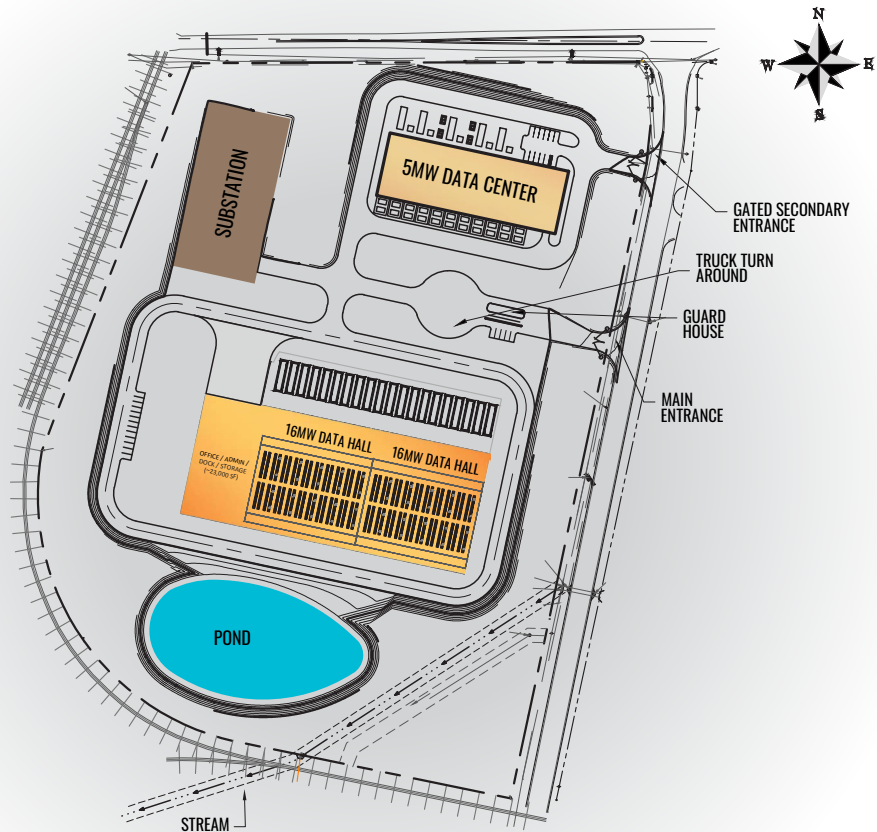


## Montgomery (MGM1)

MGM1 is strategically located in an industrial area of the city, offering prime proximity to a hyperscale edge node situated on-campus. This premier location ensures seamless connectivity with an abundant fiber network readily accessible to meet high bandwidth demands.

### Site Plan

7610 Bill Joseph Pkwy  
Hope Hull, AL 36043



Acreage **18**

Number of Buildings **1**

SF/Building **113,000 SF**

Power **32cMW/48gMW**

Utility Provider **Alabama Power**

Status **Planning**

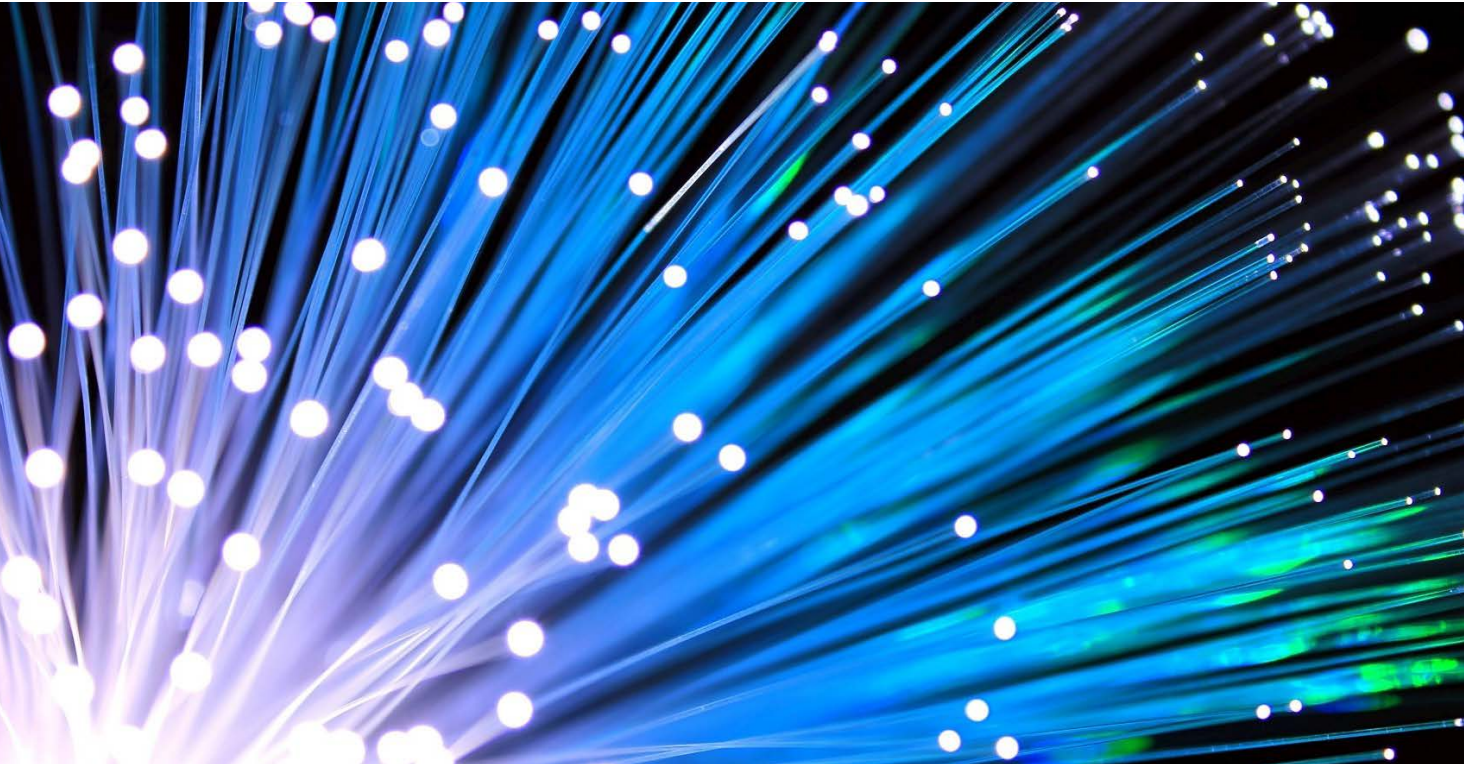
# Myrtle Beach Cable Landing Station (MYR1)



With completion in 2023, this facility is strategically located on the South Carolina coast between other cable landing locations in Florida and Virginia Beach, where it offers full connectivity and direct access to the rapidly expanding hyperscale data center footprint in the Southeast. With DC BLOX direct dark fiber access from all hyperscale-ready locations, the Myrtle Beach cable landing station enables true global communications in the region.



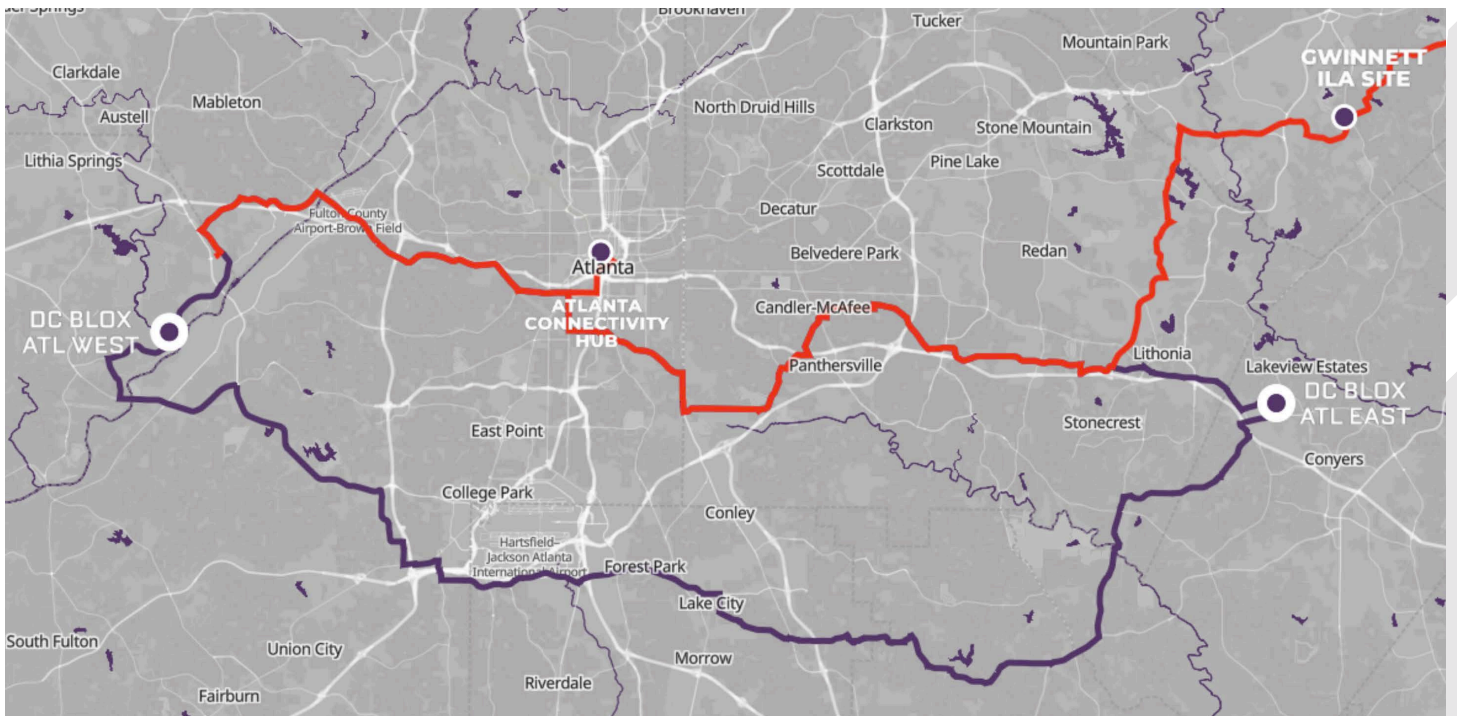
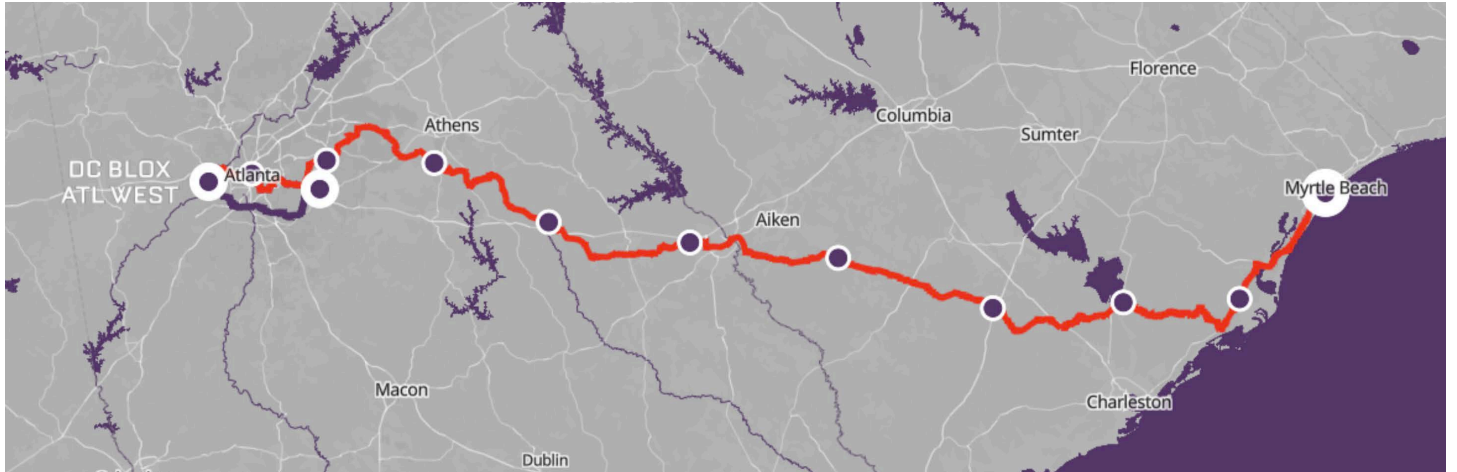
## Dark Fiber



DC BLOX has built the first high-capacity, low-latency dark fiber East-West route from Lithia Springs, Georgia, to Myrtle Beach, South Carolina. The route connects into Atlanta's Internet Exchanges and passes through Augusta and Charleston to the Myrtle Beach cable landing station offering connectivity to regional and international destinations. DC BLOX is also building a dark fiber metro ring around Atlanta connecting into the Atlanta East and Atlanta West sites as well as to the East-West route. New dark fiber route options to suit specific customer needs are also available.



# Regional Fiber Network



dcblox.com | 877.590.1684



1040 Crown Pointe Pkwy, Suite 800, Atlanta, GA 30338