

HYPERSCALE-READY DIGITAL INFRASTRUCTURE



INTEGRATED SOLUTIONS

The rapid growth of the Southeastern US and the desire of hyperscale, cloud and SaaS (Software-as-a-Service) companies to deploy infrastructure closer to their consumers in the region is driving massive investments to expand digital infrastructure. The accelerating scale of digital communications, the need for richer user experiences in accessing content, and the desire to expand cloud infrastructure to edge markets is driving demand for data center and fiber capacity across the region.

At DC BLOX, we understand the evolving landscape where IT becomes more distributed and agile, demanding higher capacity digital infrastructure in edge markets. With the rise of IoT, social media, personal communications, and the transformative impact of AI/ML, the need for scalable solutions is more critical than ever.

In the face of this unprecedented demand, DC BLOX stands out as a vertically integrated digital infrastructure provider, uniquely positioned to deliver comprehensive solutions at scale. Our ability to deliver build-to-suit data centers and dark fiber routes caters to diverse needs, ensuring that our customers can accelerate the regional deployment of their services.

Experience the DC BLOX advantage – where our commitment to excellence meets the evolving needs of the digital age. Join us in building the future of digital infrastructure, tailored to your unique requirements. Learn more about our mission, capabilities, and commitment to accelerating the region's economic growth.



DC BLOX

HYPERSCALE-READY CAMPUSES

DC BLOX is developing hyperscale-ready data center campuses across the rapidly growing Southeastern, US. With affordable land, available power, built-in dark fiber, and direct connectivity to the new Myrtle Beach cable landing station, these facilities are designed to meet the demanding data center and network requirements of hyperscalers in the region.



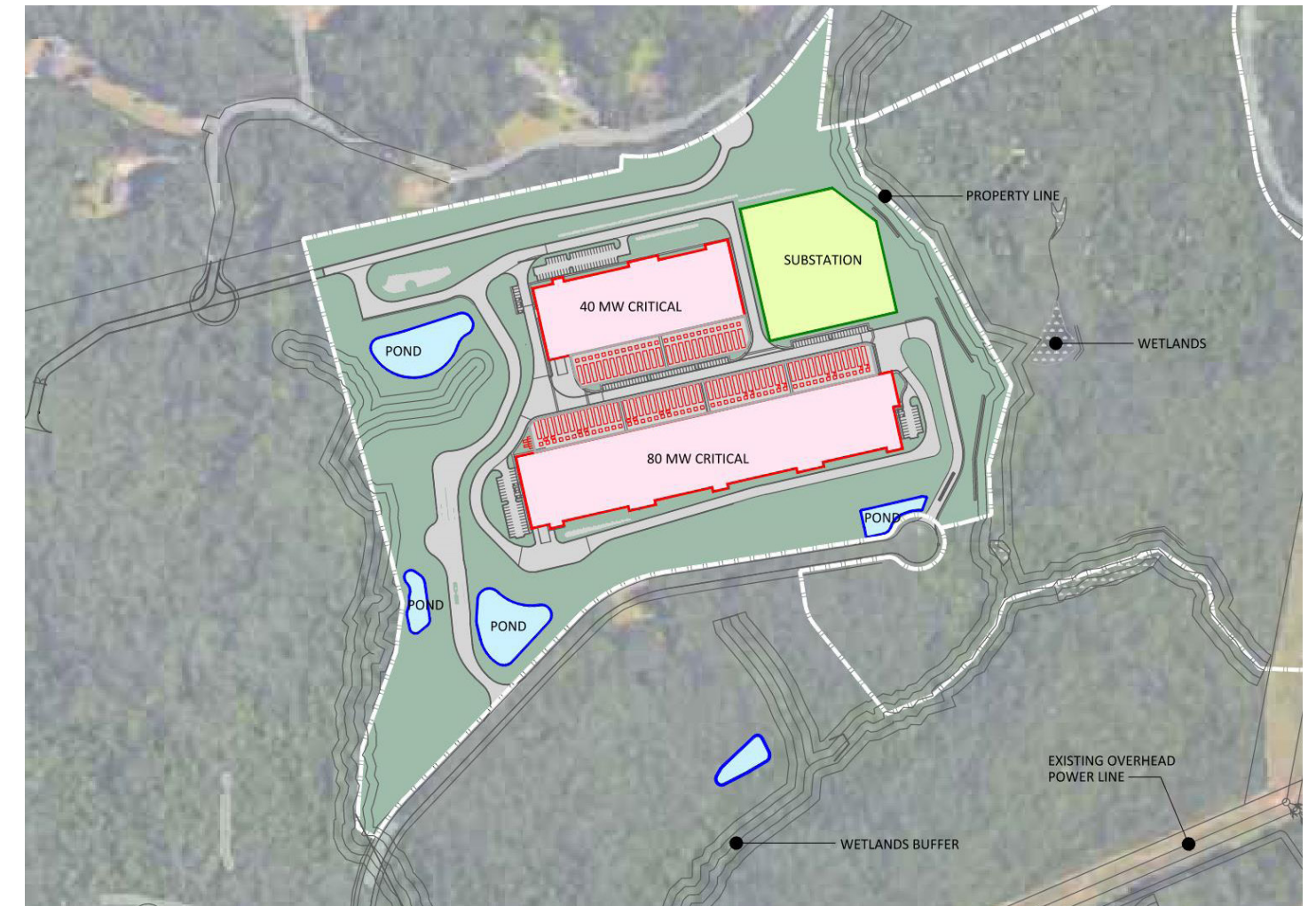
Atlanta West (ATL1)

Strategically-located on 55 acres next to Microsoft’s 300-acre facility and 2.5 miles from Google. Total capacity of 760,000 square feet with 120 MW critical load and offering N+1 redundancy, a high-density design, and provisions for liquid cooling. Also boasting two central meet-me rooms and dark fiber to 56 Marietta Street, 180 Peachtree Street and the Myrtle Beach cable landing station.



Acreage	55.37
Total SF (Buildable)	~761,000 SF
Number of Buildings	2 (all 2-story)
SF/Building	ATL1-A: 498,000 SF ATL1-B: 263,000 SF
Initial Move-In	9/25 with 15MW
Total (Critical/Gross)	120cMW/180gMW
Utility Provider	Greystone

Site Plan



1701 North River Rd
Lithia Springs, GA 30122



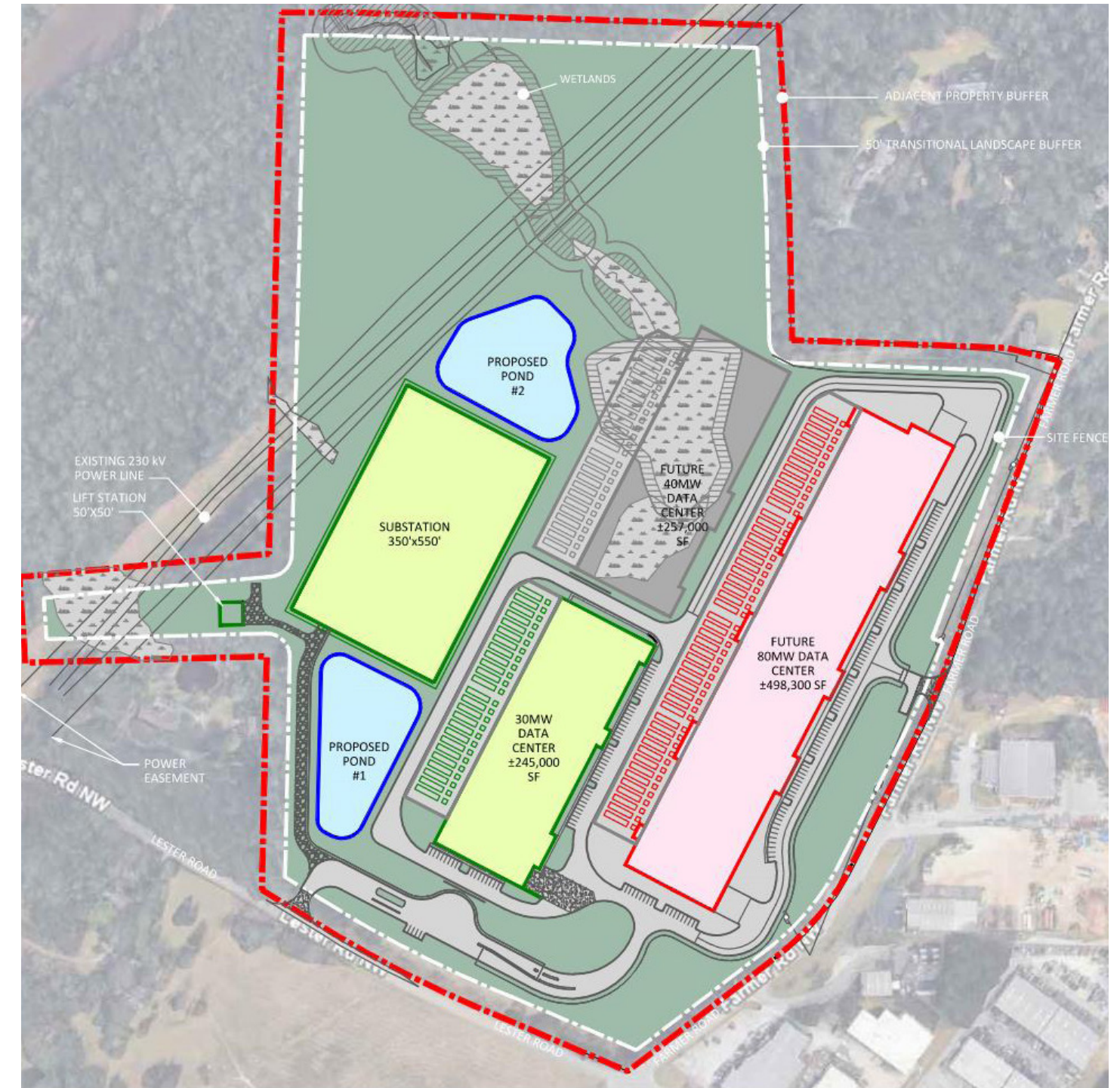
Atlanta East (ATL2)

68 acres of land with over 1 million square feet of data center space at full build-out and just 24 miles east of Atlanta. DC BLOX also plans to build a dark fiber ring around the Atlanta metropolitan area as part of the project. The ring will provide significant new fiber capacity for campus tenants and will also provide a resilient connection to the DC BLOX dark fiber route transiting from Atlanta to its Myrtle Beach, SC Cable landing station, offering global connectivity options.



Acreage	68.41
Total SF (Buildable)	~1,015,000 SF
Number of Buildings	3 (all 2-story)
SF/Building	ATL2-A: 254,000 SF
	ATL2-B: 498,000 SF
	Future ATL2-C: 263,000 SF
Initial Move-In	12/26 with 70MW
Total (Critical/Gross)	144cMW/216gMW
Utility Provider	GA Power

Site Plan



1726 Farmer Rd
Conyers, GA 30012

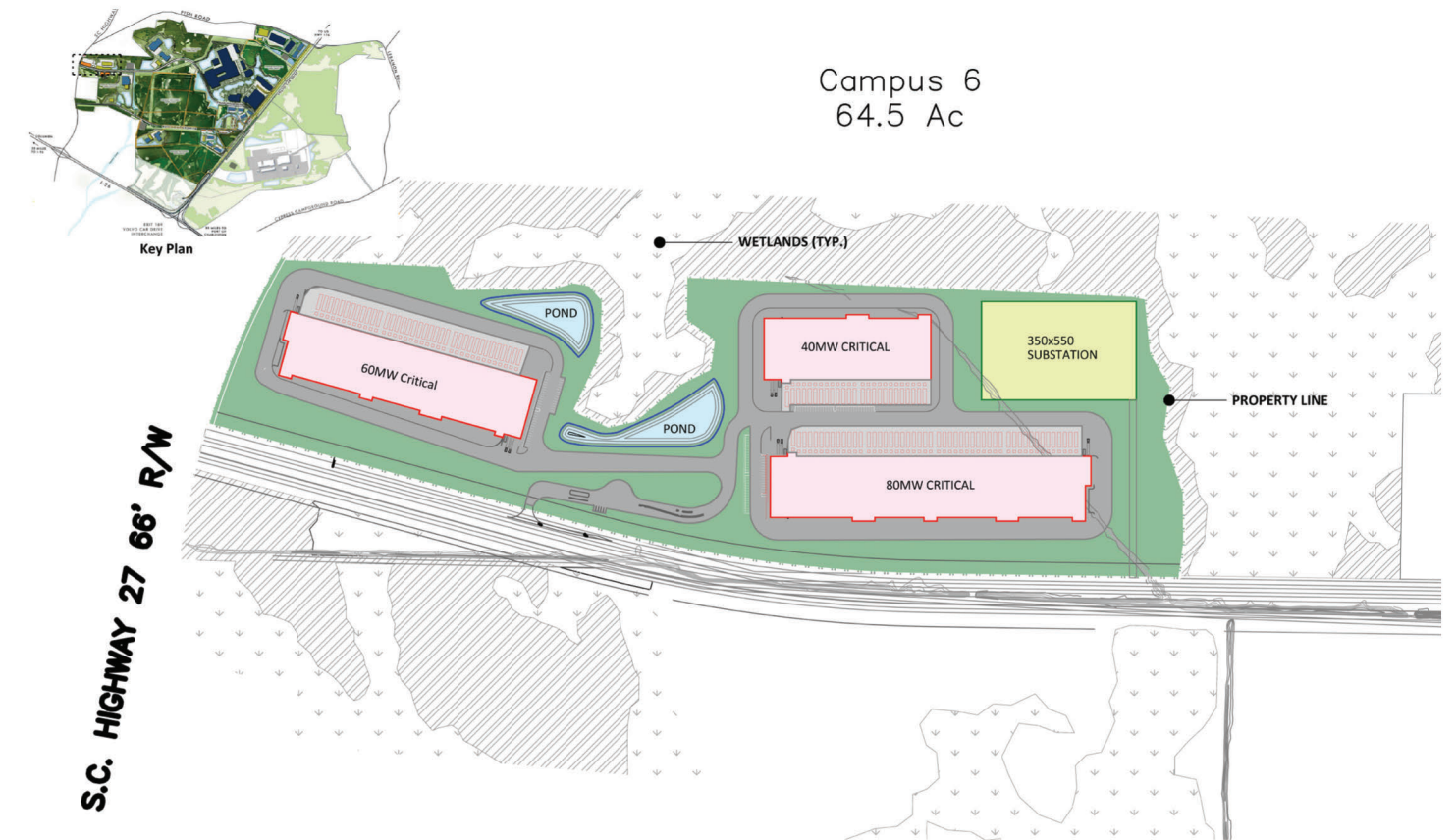
Charleston North (CHS1)



DC BLOX is offering a hyperscale-ready data center campus located on 64 acres in the new Camp Hall Industrial Park in South Carolina with direct access to SC Hwy 27 to support the rapidly growing demand for digital infrastructure space, power, and connectivity in the area.



Site Plan



Camp Hall Industrial Park – Campus 6

Acreage	64.4
Total SF (Buildable)	~1,131,000 SF
Number of Buildings	3 (all 2-story)
SF/Building	CHS1-A: 498,000 SF CHS1-B: 263,000 SF CHS1-C: 370,000 SF
Initial Move-In	3/25 with 22.5MW
Total (Critical/Gross)	180cMW/270gMW
Utility Provider	Santee Cooper

Birmingham (BHM1)

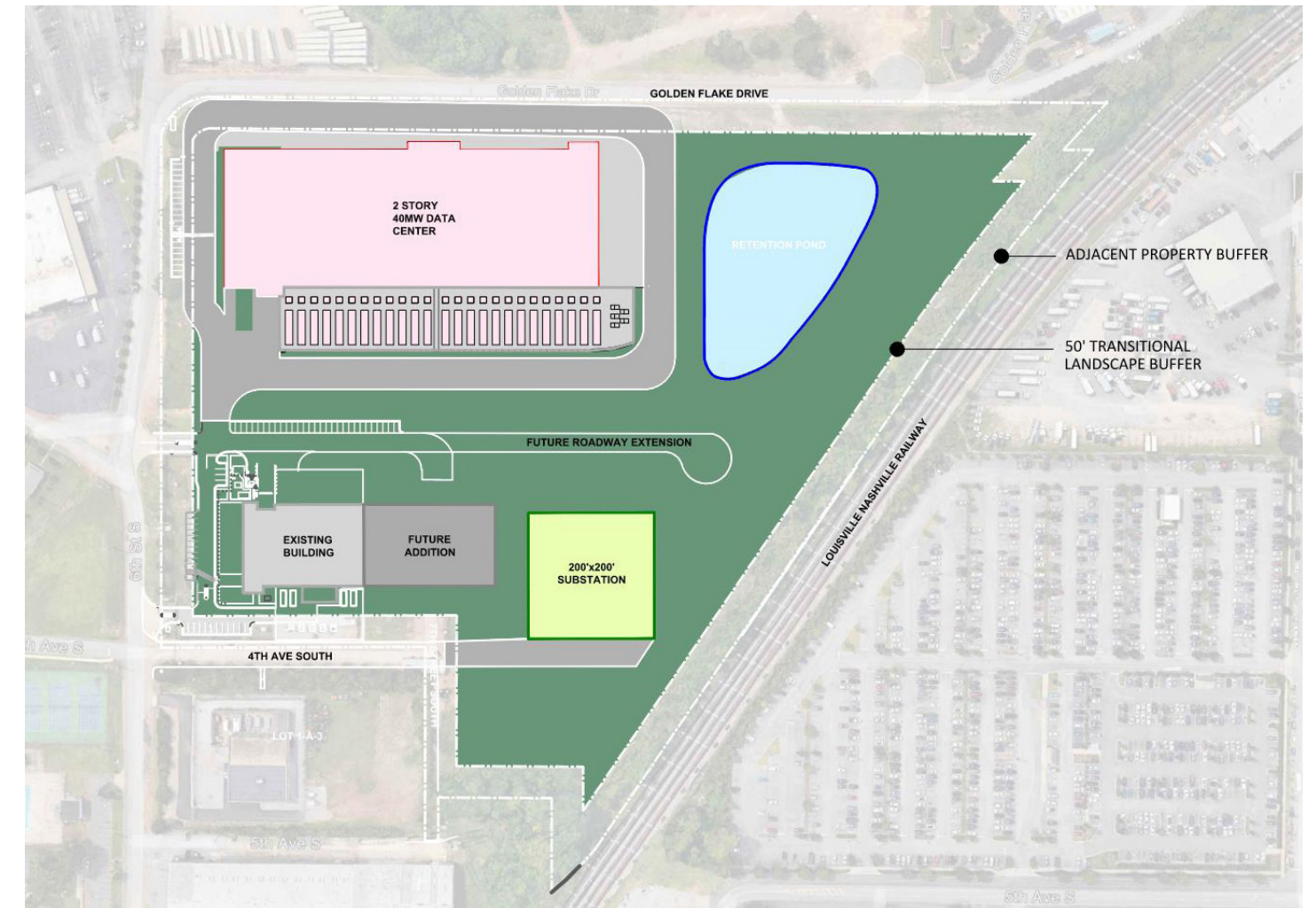


DC BLOX's Birmingham data center campus offers colocation and wholesale solutions today, with a new 263,000 sq ft data center available for large-scale build-to-suit deployments. The campus is connected to DC BLOX's regional network with dark fiber connectivity available.



Acreage	30.53 (~15 available)
Total SF (Buildable)	263,000 SF
Number of Buildings	2
SF/Building	BHM1-B: 263,000 SF (2-story)
Initial Move-In	3/27 with 54MW
Total (Critical/Gross)	40cMW/60gMW
Utility Provider	Alabama Power

Site Plan



433 6th St South
Birmingham, AL 35233



Myrtle Beach Cable Landing Station

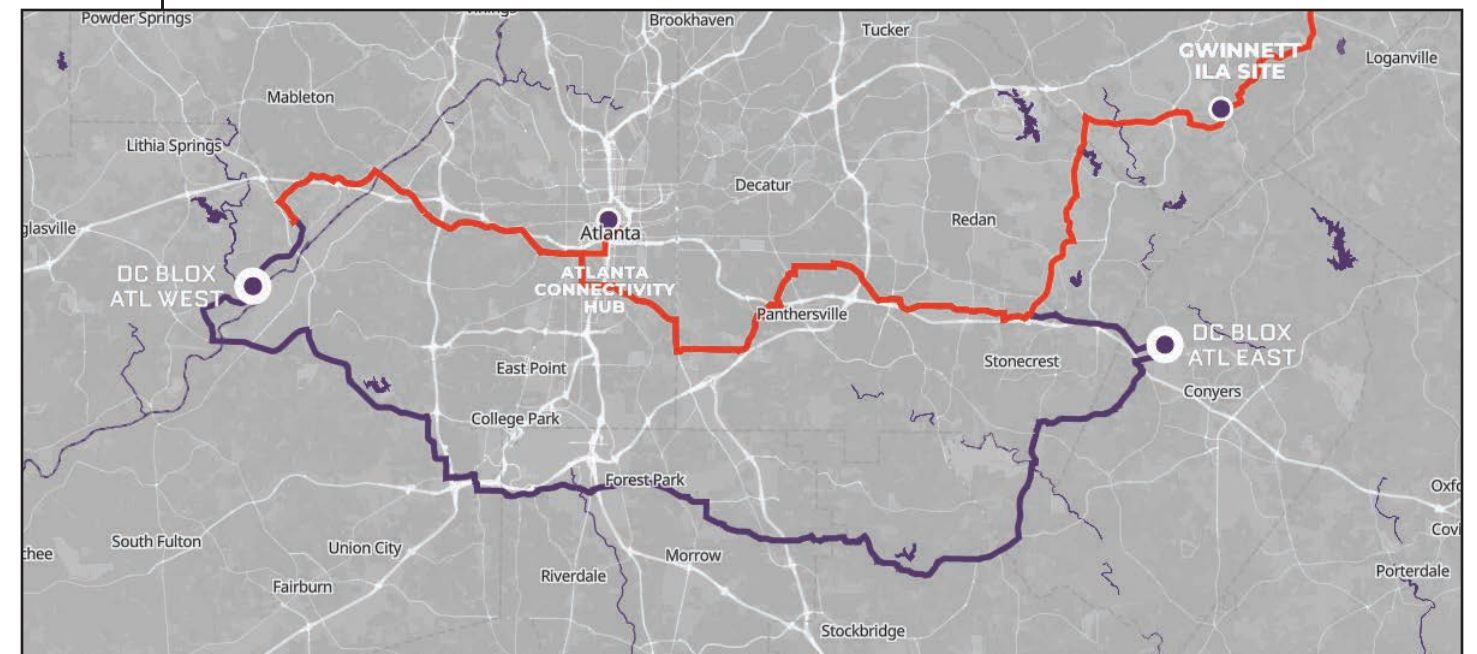
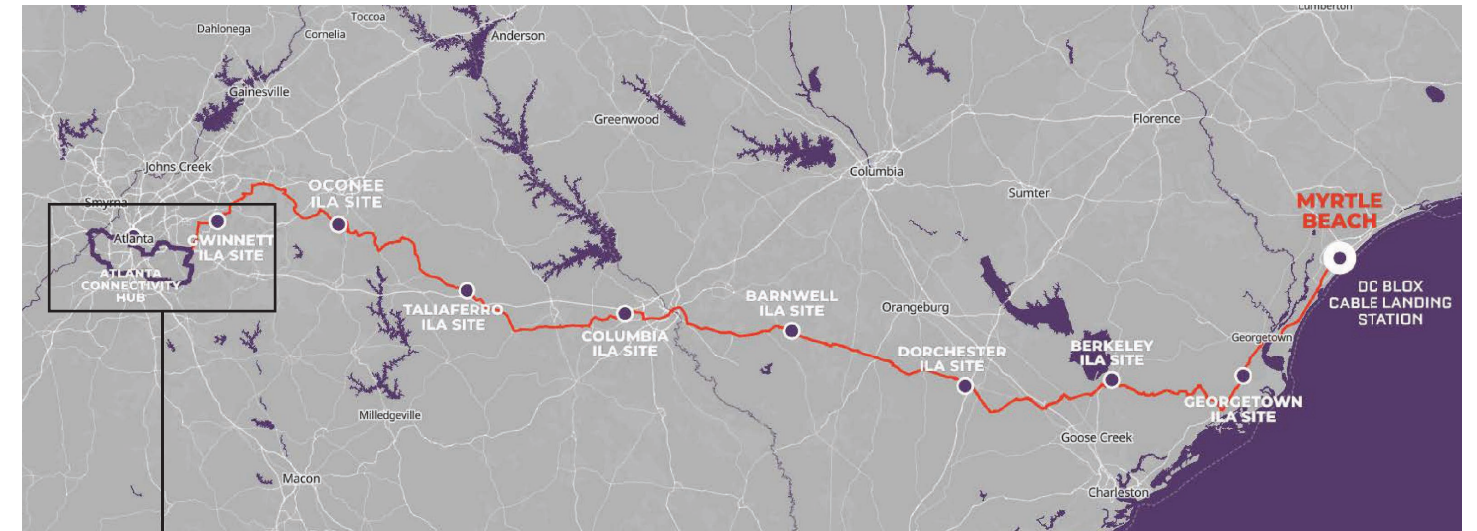
With completion in 2023, this facility is strategically located on the South Carolina coast between other cable landing locations in Florida and Virginia Beach, where it offers full connectivity and direct access to the rapidly expanding hyperscale data center footprint in the Southeast.

With DC BLOX direct dark fiber access from all hyperscale-ready locations, the Myrtle Beach cable landing station enables true global communications in the region.



Dark Fiber

DC BLOX has built the first high-capacity, low-latency dark fiber East-West route from Lithia Springs, GA to Myrtle Beach, SC. The route connects into Atlanta's Internet Exchanges and passes through Augusta and Charleston to the Myrtle Beach cable landing station offering connectivity to regional and International destinations. DC BLOX is also building a dark fiber metro ring around Atlanta connecting into the ATL East and ATL West sites as well as to the East-West route. New dark fiber route options to suit specific customer needs are also available.



DC BLOX Background & Experience

Digital infrastructure growth is a necessity. DC BLOX addresses this urgency with a mission to provide the essential digital infrastructure that ensures rich customer experiences, business prosperity, and local community opportunity across the Southeast US. In addition to hyperscale-ready sites, our offerings include five edge-market data centers with expansion opportunities, a sub-sea cable landing station in Myrtle Beach, and a regional network spanning the Southeast.

Founded in 2014, DC BLOX has been progressively perfecting the design and construction processes of its modular, interconnected, mission-critical data center facilities. We have a proven track record in the delivery of greenfield, purpose-built facilities and are often relied upon to build new data centers on accelerated schedules.

In addition, DC BLOX's capability to build dark fiber routes with its data centers enables a one-stop solution that reduces negotiation complexities, streamlines deployment, and accelerates the realization of our customer's business objectives.

- Scalable designs that support success-based deployment from 1MW to 100MW+
- All facilities designed and built to Uptime Institute Tier III requirements (Birmingham and Greenville certified)
- Custom dark fiber route construction
- Robust ecosystem of business partner and government relationships in the Southeast that facilitate rapid land acquisition, construction, operations, and connectivity
- Well capitalized and supported by leading investors from Bain Capital and Post Road Group

DC BLOX is driving growth by expanding integrated infrastructure that includes connected data center sites, dark fiber solutions, and cross-continental cable landing to meet the current and future needs of our ever-expanding digital world, with proven capacity to serve key Southeast markets since 2014.



DC BLOX

business continuity at the speed of light

